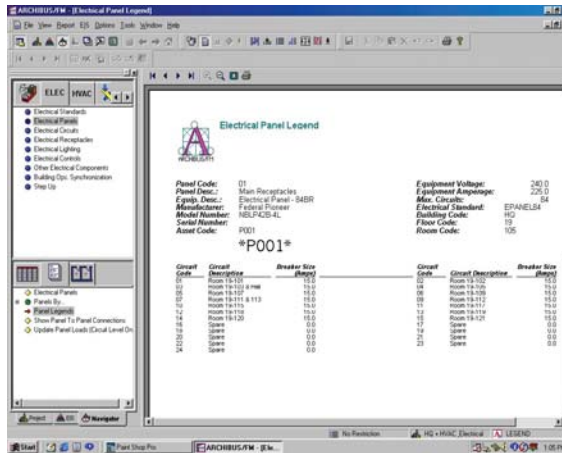


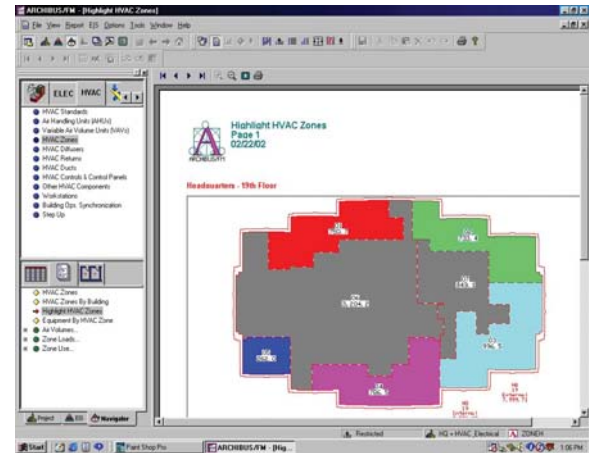
► MICROVIEW HVAC & ELECTRICAL MODULE FOR ARCHIBUS

The *MicroView HVAC and Electrical Module for ARCHIBUS* enables **you** to create an electronic inventory of the critical systems in **your** facility. **You** can easily maintain and retrieve information about all electrical components: electrical panels, circuits, lighting, receptacles, and control systems. **You** define component standards with key information such as power requirements, heat load, and vendor information. Circuit and panel loads, component counts and listed by building, floor and room can be calculated from the built-in reporting system. Overloaded circuits and other potential problems can be prevented during the design stage.

The software can summarize HVAC zone cooling requirements by automatically taking into account the total heat load for people, equipment and lighting. It can show counts of HVAC equipment sorted by the HVAC zone, floor, building and type. **You** can create intelligent floor plans and reports to serve as a reference for routine maintenance purposes, or for emergency situations. These reports are also designed to satisfy documentation requirements of an Indoor Air Quality (IAQ) monitoring plan.



Panel Legend Report



Highlight HVAC Zones Report

ARCHIBUS coupled with AutoCAD offers facilities managers a powerful software foundation. The MicroView HVAC and Electrical Modules are CAFM tools that address the fundamental infrastructure tracking needs of an intelligent building.

ARCHIBUS drawings and database coupled with MicroView HVAC and Electrical Modules record, maintain, and retrieve accurate information about **your** HVAC and electrical systems creating a complete system.